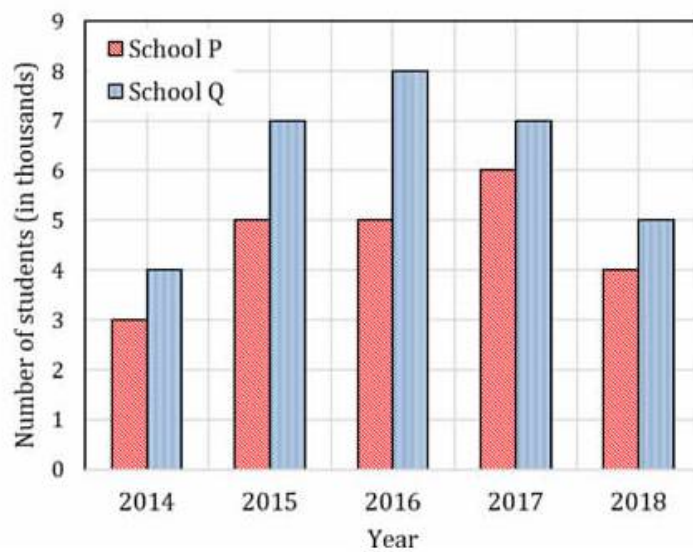


## GATE Aptitude Practice Questions Bar Charts

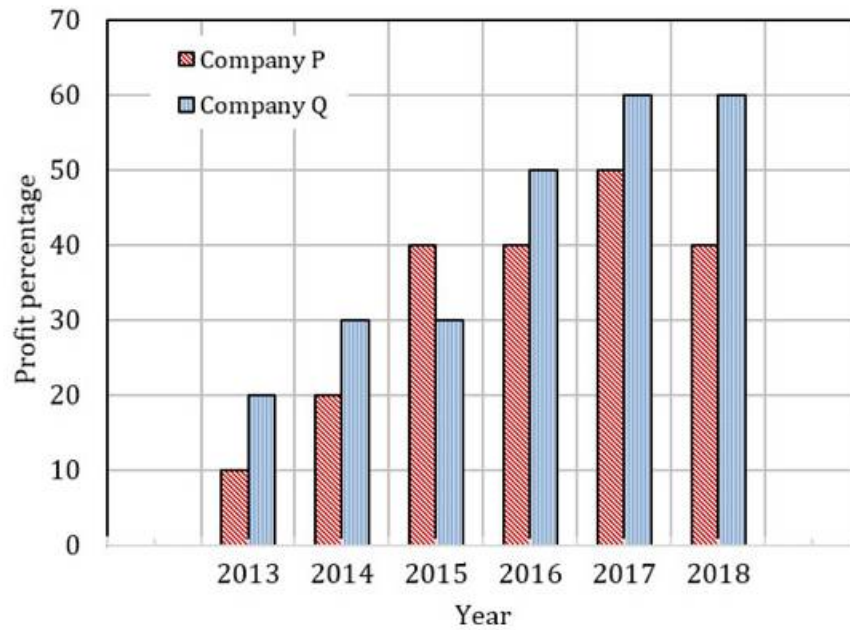
**Q.No. 1** The following figure shows the data of students enrolled in 5 years (2014 to 2018) for two schools P and Q. During this period, the ratio of the average number of the students enrolled in school P to the average of the difference of the number of students enrolled in schools P and Q is \_\_\_\_\_.



- (A) 8 : 23
- (B) 23 : 8
- (C) 23 : 31
- (D) 31 : 23

A division of PhIE Learning Center

**Q.No. 2** The profit shares of two companies P and Q are shown in the figure. If the two companies have invested a fixed and equal amount every year, then the ratio of the total revenue of company P to the total revenue of company Q, during 2013 - 2018 is \_\_\_\_\_.

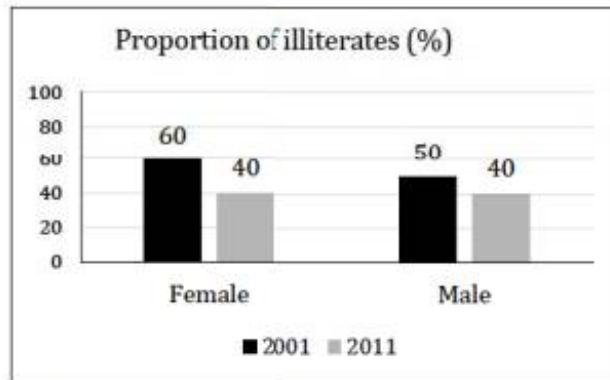


- (A) 15 : 17
- (B) 16 : 17
- (C) 17 : 15
- (D) 17 : 16

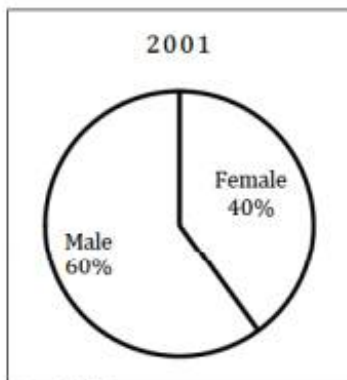
IITians

A division of PhIE Learning Center

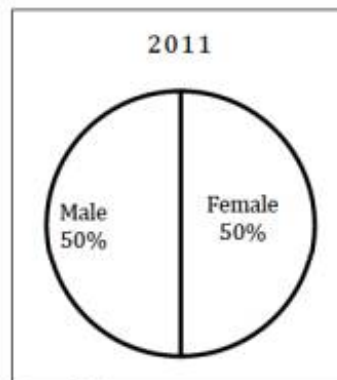
**Q.No. 3** The bar graph in Panel (a) shows the proportion of male and female illiterates in 2001 and 2011. The proportions of males and females in 2001 and 2011 are given in Panel (b) and (c), respectively. The total population did not change during this period. The percentage increase in the total number of literates from 2001 to 2011 is \_\_\_\_.



Panel (a)



Panel (b)



Panel (c)

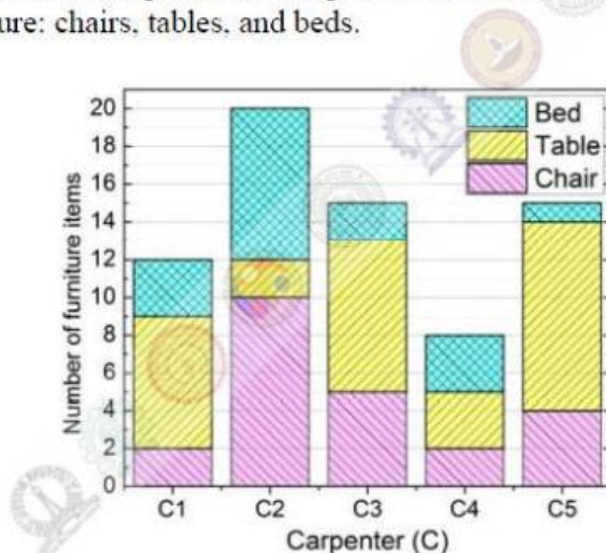
(A) 30.43

(B) 33.43

(C) 34.43

(D) 35.43

**Q.No. 4** The bar graph below shows the output of five carpenters over one month, each of whom made different items of furniture: chairs, tables, and beds.



Consider the following statements.

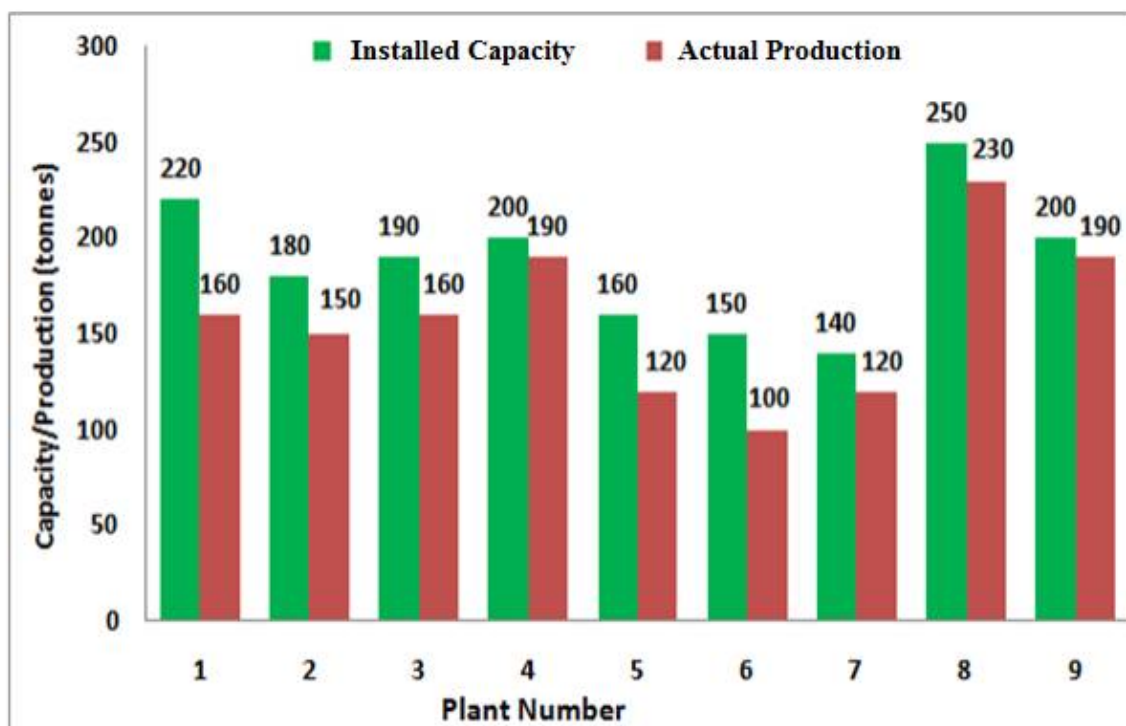
- The number of beds made by carpenter C2 is exactly the same as the number of tables made by carpenter C3.
- The total number of chairs made by all carpenters is less than the total number of tables.

Which one of the following is true?

- (A) Only i                      (B) Only ii                      (C) Both i and ii                      (D) Neither i nor ii

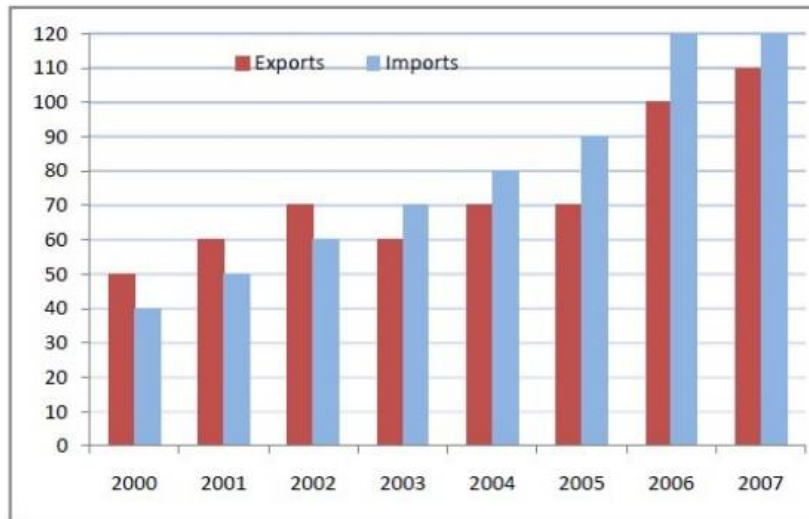
A division of PhIE Learning Center

**Q.No. 5** The following graph represents the installed capacity for cement production (in tonnes) and the actual production (in tonnes) of nine cement plants of a cement company. Capacity utilization of a plant is defined as ratio of actual production of cement to installed capacity. A plant with installed capacity of at least 200 tonnes is called a large plant and a plant with lesser capacity is called a small plant. The difference between total production of large plants and small plants, in tonnes is \_\_\_\_\_.

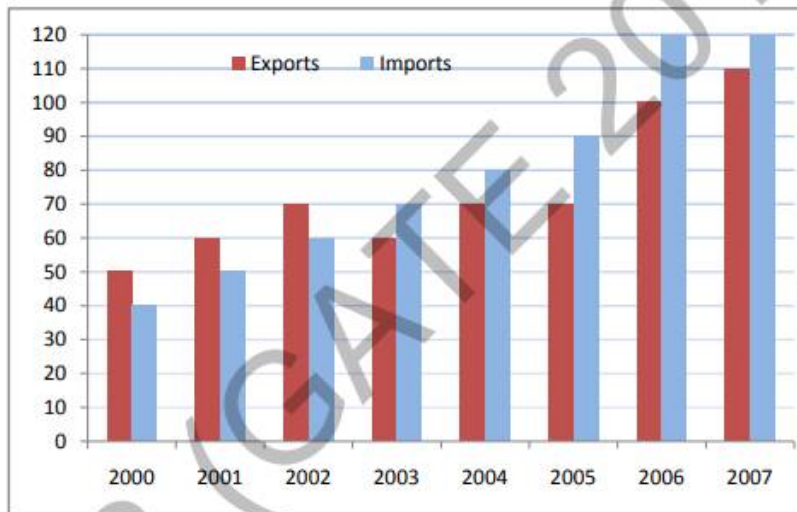


A division of PhIE Learning Center

**Q.No. 6** The exports and imports (in crores of Rs.) of a country from the year 2000 to 2007 are given in the following bar chart. In which year is the combined percentage increase in imports and exports the highest?



**Q.No. 7** The exports and imports (in crores of Rs.) of a country from 2000 to 2007 are given in the following bar chart. If the trade deficit is defined as excess of imports over exports, in which year is the trade deficit  $\frac{1}{5}$ th of the exports?



(A) 2005

(B) 2004

(C) 2007

(D) 2006

**Answer Key**

Q. No.	Ans.
1	B
2	B
3	A
4	C
5	120
6	2006
7	D

A division of PhIE Learning Center

### **IGC Live GATE Online Class Room Coaching**

- Live online Classes for all subjects including mathematics and aptitude by subject experts (IIT/IISc Fellow)
- Good Study Material (e-form)
- Topic-wise assignments (e-form)
- 80+ online Exam
- Course completion at-least one in advance of GATE-2021
- Scholarship for GATE Qualified student and Class/Univ. Toppers
- Guaranty of best learning

Details- <https://www.iitiansgateclasses.com/GATE-Online-Coaching.aspx>

### **IGC GATE Distance Learning Program**

- Detailed and well explained subject wise study material (e-form)
- Topic wise assignments and discussion (e-form)
- Weekly online exam (topic wise)
- ALL India GATE online test series
- Complete Guidance for GATE Preparation
- Online doubt clearing sessions

Details- <https://www.iitiansgateclasses.com/Distance-Learning-Program.aspx>

### **IGC GATE Online Test Series**

- IGC provide 80 plus online tests to practice well before appearing for GATE.
- IGC have divided online test series in 4 parts.
  - Topic wise exam
  - Subject wise exam
  - Module wise exam
  - Complete syllabus exam

Details- <https://www.iitiansgateclasses.com/gate-online-test-series.aspx>

**IITians GATE CLASSES: GATE Online AE | ME | ECE | EEE | INE | CSE Coaching Classes**

**Register for classes -** <https://www.iitiansgateclasses.com/register-for-classes.aspx>